

*Parameters Subject to Change Without Notice*

## FEATURES

- Adaptive 100/120Hz current ripple remover
- Input voltage range 15V~80V
- Built-in 80V power MOSFET
- Internal LED voltage limit
- Internal LED current limit
- Short/Open protection
- Hot plug protection
- Over temperature protection
- SOT89-3 and TO252-2 packages

## APPLICATIONS

- LED lighting

## ELECTRICAL SPECIFICATIONS

Parameter	Symbol	Value	Unit
LED Voltage	VOUT	40	V
LED Current	IOUT	0.2	A

## DESCRIPTION

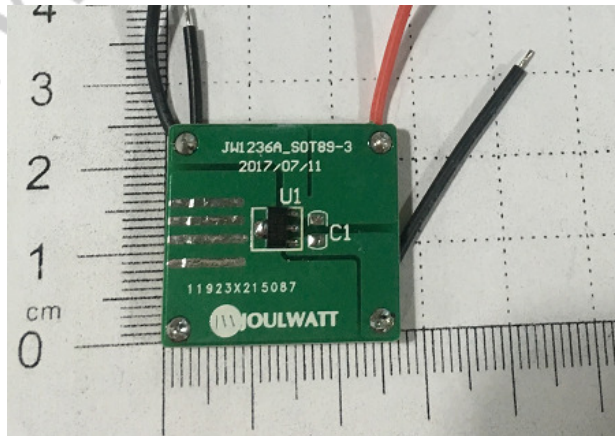
JW<sup>®</sup>1236A is used to drive a LED string ( $\leq 80V$ ), and remove the 100/120Hz current ripple on AC/DC power.

Patented control scheme ensures the good ripple removing performance with ultra-low BOM cost, no external components.

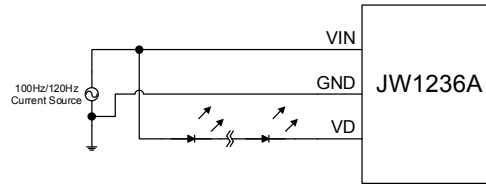
JW1236A provides all-round protections, output short protection (SCP), output open protection (OVP), HOT-PLUG protection and over thermal protection (OTP). When the OTP is triggered, ripple current will be released with the temperature.

The maximum LED current is internally limited at 0.8 A.

## TYPICAL APPLICATION



SCHEMATIC



BILL OF MATERIALS

Quantity	Designator	Comment	Description	Footprint	Manufacturer	Manufacturer P/N
1	U1	JW1236A	IC	SOT89-3	Joulwatt	JW1236A

PRINTED CIRCUIT BOARD LAYEROUT

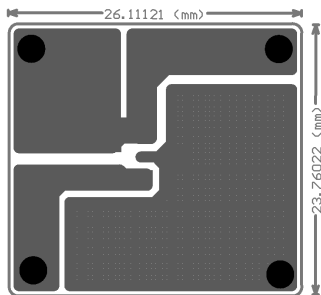


Figure1 Top Layer

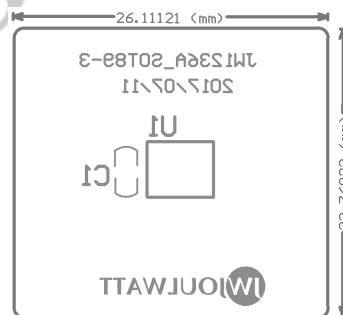


Figure2 Silk Layer

**QUICK START GUIDE**

1. Connect the IN+&IN- of the EVB to the output of the pre-driver and connect the positive terminal and negative terminal of the load to LED+&LED-, respectively.
2. The load must be LEDs when you test the characteristics of the EVB.
3. Turn on the power supply of the pre-driver, the evaluation board starts operating in normal condition.
4. For better Short/Open/hot plug protection and higher voltage applications, please refer to the application note of JW1236A
4. For more information, please refer to the datasheet of JW1236A.

JoulWatt Confidential

**IMPORTANT NOTICE**

- Joulwatt Technology Inc. reserves the right to make modifications, enhancements, improvements, corrections or other changes without further notice to this document and any product described herein.
- Any unauthorized redistribution or copy of this document for any purpose is strictly forbidden.
- Joulwatt Technology Inc. does not warrant or accept any liability whatsoever in respect of any products purchased through unauthorized sales channel.

JoulWatt Confidential

*Copyright © 2018 EV1236A\_S0\_R0 Incorporated.*

*All rights are reserved by Joulwatt Technology Inc.*